



**COMMUNITY
ENGAGEMENT
OFFICER: 2-YEAR
FIXED TERM
(EXTENDABLE)
Job Description**



AN INTRODUCTION TO BIRCHALL

The Birchall Trust empowers people affected by rape, sexual and domestic abuse, sexualised or domestic violence to recover from their trauma so they can lead safe and fulfilling lives irrespective of gender identity, sexuality, ethnicity, culture, or religion.

We believe that we should live in a society that is free of rape, sexual abuse, and sexualised violence and through a trauma informed approach we...

- **Realise** the potentially damaging consequences of traumatic experiences and the opportunities that exist for healing through safe relationships.
- **Recognise** the signs of trauma, and seek to address the underlying causes
- **Respond** with empathy, integrating the knowledge of trauma into our policies and practice.
- **Resist** retraumatising people and aim to deescalate the deep anxiety that adversity can cause.

.... assisting people to recover from their trauma, by enabling them to live in the present without being overwhelmed by the thoughts and feelings of the past.

OUR CORE TRAUMA INFORMED VALUES

Our values align to the core trauma informed principles around:

Safety	We recognise the impact of shame, we create safe spaces and make people feel safe, by building trusted relationships.
Trusted	We avoid judgement and understand shaming and blaming language can damage people and harm relationships. We are emotionally aware. We avoid blame. We believe and do not judge.
Choice	We ensure that the people using our services have a voice and their choices are important, we understand that everyone's experience matters, and that recovery is an individual experience and will be different for everyone.
Collaboration	We work together to achieve the best possible outcome, we are person centred and see the person's strengths, building upon them, we are reflective and learn together
Empowerment	We seek to make a difference, innovative and be the change we want to see. We make a difference, we are transparent, and take responsibility. We develop resilience enabling people to build on their strengths.

JOB DESCRIPTION

Job Title:	Community Engagement Officer (2-year fixed term-extension subject to funding)
Accountable to Base:	Head of Community Engagement Barrow in Furness
Salary:	£23,000 pro rata – actual salary £13,800
Hours:	22.5
Closing Date:	Ongoing

ABOUT THE ROLE

The Community Engagement Officer role is a new role to Birchall. This is a 2-year project funded through the Big Lottery Reaching Communities programme.

The project will focus on engaging, helping, and providing opportunities for people who have experienced rape, sexual and domestic abuse to overcome social isolation and loneliness by taking part in therapeutic peer support groups and social/activity groups to develop confidence, resilience, and new skills.

The Community Engagement officer will facilitate the groups working with people with lived experience to design and deliver activities within the community. They will work in partnership with other agencies and organisations to support people to access different opportunities.

They will also be responsible for the development of Birchalls B-friending service where people with lived experience will have the opportunity to train to become peer mentors, who will support other Birchall service users to build their confidence and resilience to overcome personal barriers to accessing services.

The Community Engagement Officer will take responsibility for advertising, marketing, promoting and raising awareness and ensuring local agencies are aware of the services.

They will be involved in planning and organising external events related to group work and activities to raise awareness of the wider work that Birchall does and carry out regular consultations with service users to keep improving the work, proactively identify gaps in provision to offer groups that meet needs and address gaps.

ABOUT YOU

We are looking for a dynamic, creative person who has the initiative to drive this exciting opportunity forward. You will be confident when working with different stakeholders, tailoring your approach. You will need to project manage competing priorities whilst keeping tabs on data and reporting outcomes.

You will have an understanding of the dynamics of sexual abuse and other forms of violence and the impact of social isolation, as well as the ability to engage with service users in group and one to one settings. An understanding of safeguarding duties, risk management and safety planning are also required.

You will work in a trauma informed way to proactively engage people with lived experience to attend therapeutic and social groups, supporting them to co-design what these groups look like, effectively communicating with potential participants to give programme information, support and encourage engagement.

You will engage and support service users to gain valuable skills and confidence, including providing development opportunities through the development of Birchall's B-friend Peer Mentoring Programme.



PERSON SPECIFICATION

Specialist Knowledge & Qualifications	Essential	Desirable
Experience of working with survivors of sexual/domestic abuse or people with multiple and complex needs	E	
Proven track record/experience of planning and facilitating groupwork and activities – being flexible with adapting topics and sessions to suit the groups needs	E	
Proven track record of proactively reaching out to service users in innovative way	E	
The ability to regulate group dynamics and challenging behaviours of individuals who might act out, behave aggressively, or dominate the conversation.	E	
Experience of working with/supporting volunteers		D
Experience of working with each person using our services to ensure they feel empowered and have choice to lead their own recovery.		D
An understanding of social isolation, its causes, and effects	E	
Understanding of the impacts of trauma and commitment to working within trauma informed principles	E	
An excellent understanding of legislative framework including. <ul style="list-style-type: none"> • Confidentiality • Professional boundaries • Data protection and GDPR principles • Equal opportunities 	E	
Experience of working autonomously to manage workload, self-administration, and experience/ability to use case management systems	E	
Experience of working in partnership with other agencies to ensure people can access other specialist services.	E	

Trauma Informed Values	Essential	Desirable
Able to work in a flexible and responsive way to meet the gender and cultural needs of people using our services.	E	
Able to listen closely and communicates effectively with a variety of communities, agencies, and individuals.	E	
Able to act with integrity and take personal accountability for your work.	E	
Able to use reflective practice to continually improve performance by learning from mistakes and celebrating success	E	
Commitment to delivering quality services, achieve results, working effectively to meet KPI's and sharing knowledge and learning.	E	
Commitment to supporting people using our services to be involved through feedback and having a platform to amplify their voices	E	
Commitment to raise awareness in the community and challenge wider issues affecting the people who use our services	E	
Able to apply creative thinking and challenge the status quo to introduce new ideas	E	

HOW TO APPLY

Thank you for showing an interest in applying for a role with The Birchall Trust. Please fill out our online [Application Form](#). Alternately, go to our [Vacancies Page](#) on our website, select the job you would like to apply for and click the Apply Here button.

Top Tip: Please leave up to 20 seconds for the form to submit. You will be redirected to the Equal Opportunities Form once it has been submitted. You will need to attach your most recent CV and you can upload any additional documents that you think will help with your application.

If you require any further advice on any of the above, please phone **01229 820828**

Birchall in Numbers

WHAT WE'VE ACHIEVED

2021-22

During the first year of our new strategy, we delivered our services to **622** adults and **165** CYP in the FY 2021-22.

Adults

497 Female (80%), 94 Male (15%)
6 Transgender (1%) 6 non-binary (1%)
19 Not declared (3%)



CYP

111 Female (67%) 35 Male (21%) 2 Transgender (1.5%) 2 Gender fluid (1.5%) 2 non-binary (1.5%) 13 Not specified (7.5%)



“

"I cannot thank the staff at Birchall enough for what they have done for me; I am incredibly grateful to my counsellor for helping me change things for the better and finally understand what empowerment really means!! Thank you, J"

Female, Aged 30

”

WHY BIRCHALL?

Being a part of team Birchall is a rewarding and exciting experience. With 26 full time and freelance team members across Cumbria and Lancashire, and numerous volunteers and ambassadors, you'll join a strong network of people dedicated to supporting people affected by rape and sexual abuse.

Each year we campaign, fundraise and offer educational programmes as well as wellbeing services and group work activity sessions.

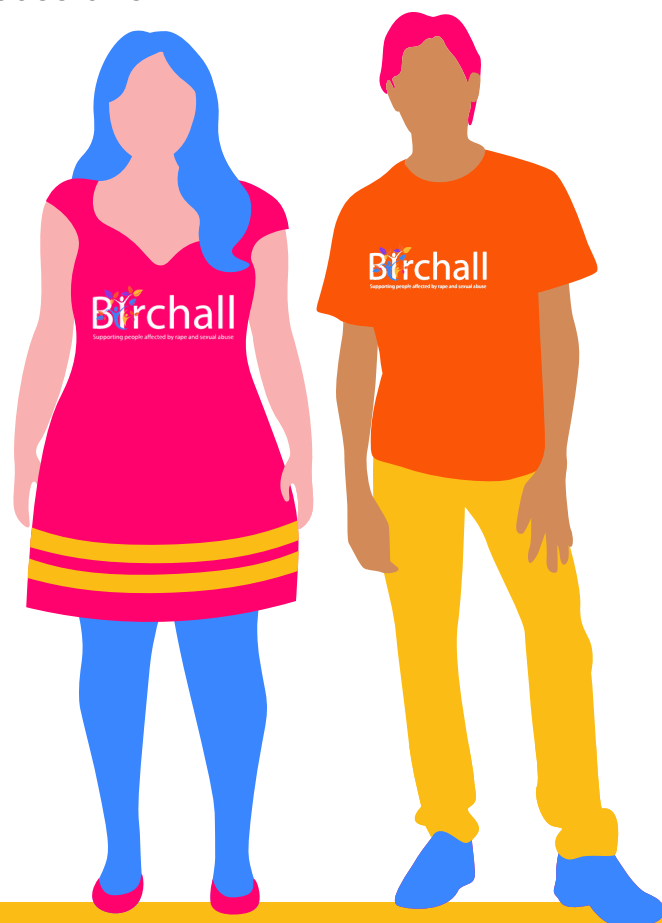
Our Volunteers

We have had some amazing people raise money and awareness for Birchall this year. From Running the Great North Run, talking to students at freshers' events, Walking the 3 peaks in one day and even joining us at the Keswick to Barrow Walk... we want to thank everyone who helps us support people affected by rape and sexual abuse this year!

What we offer

We recognise that each person using our services is an expert on their own emotional process and we aim to create an environment where people can develop trust in their own intuition and safety in a space where they can begin to explore their feelings and thoughts about their experience.

Our framework consists of 3 stages:



1. Stabilisation & Understanding

2. Processing & Acceptance

3. Integration & Engagement

Counselling

Education & Training

Wellbeing

Peer Support

“

“I can now understand why I feel and behave the way I do. I have learned grounding techniques which are invaluable. The relationship between my counsellor and I has been priceless. Thank you for giving me my life back.”

Female, 54, Kendal

”

USEFUL LINKS



[@TheBirchallTrust](#)



[@BirchallTrust](#)



[@thebirchalltrust](#)



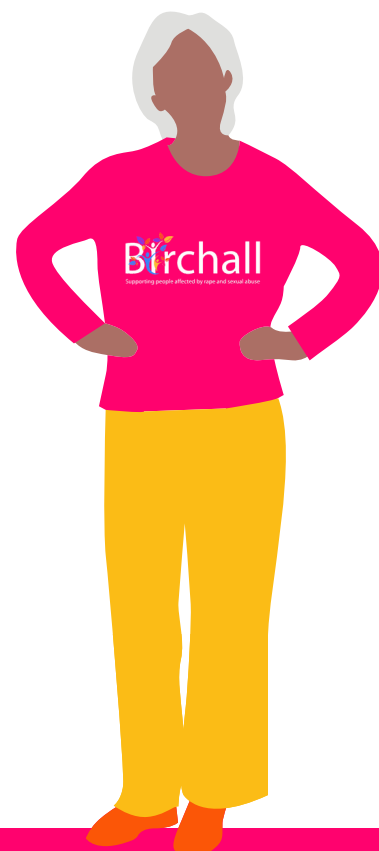
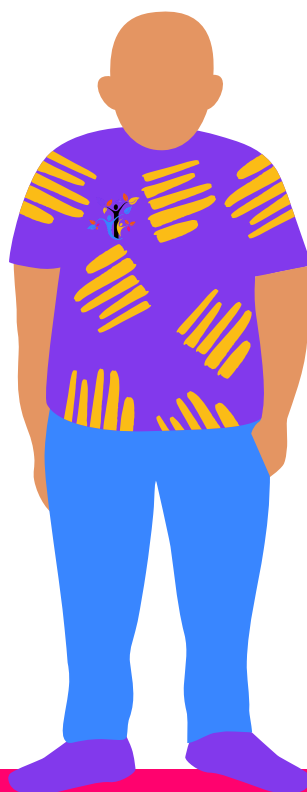
[The Birchall Trust](#)



www.birchalltrust.org.uk



[The Charity Commission](#)
- GOV.UK (www.gov.uk)



Barrow-in-Furness Telephone: 01229 820828

Morecambe Telephone: 01524 239595

Blackpool Telephone: 01253 201946

Registered Charity No: 1109637 · Company Number: 5424196